

Educational Transformation for the 21st Century - EduTrans21



Co-funded by
the European Union



<https://creativecommons.org/licenses/by-nc/4.0>

Disclaimer: Funded by the European Union. Views and opinions expressed are however those of the author(s) only and do not necessarily reflect those of the European Union or the European Education and Culture Executive Agency (EACEA). Neither the European Union nor EACEA can be held responsible for them.

 infra.run




BERUFLICHE SCHULE ITECH
Elbinsel Wilhelmsburg

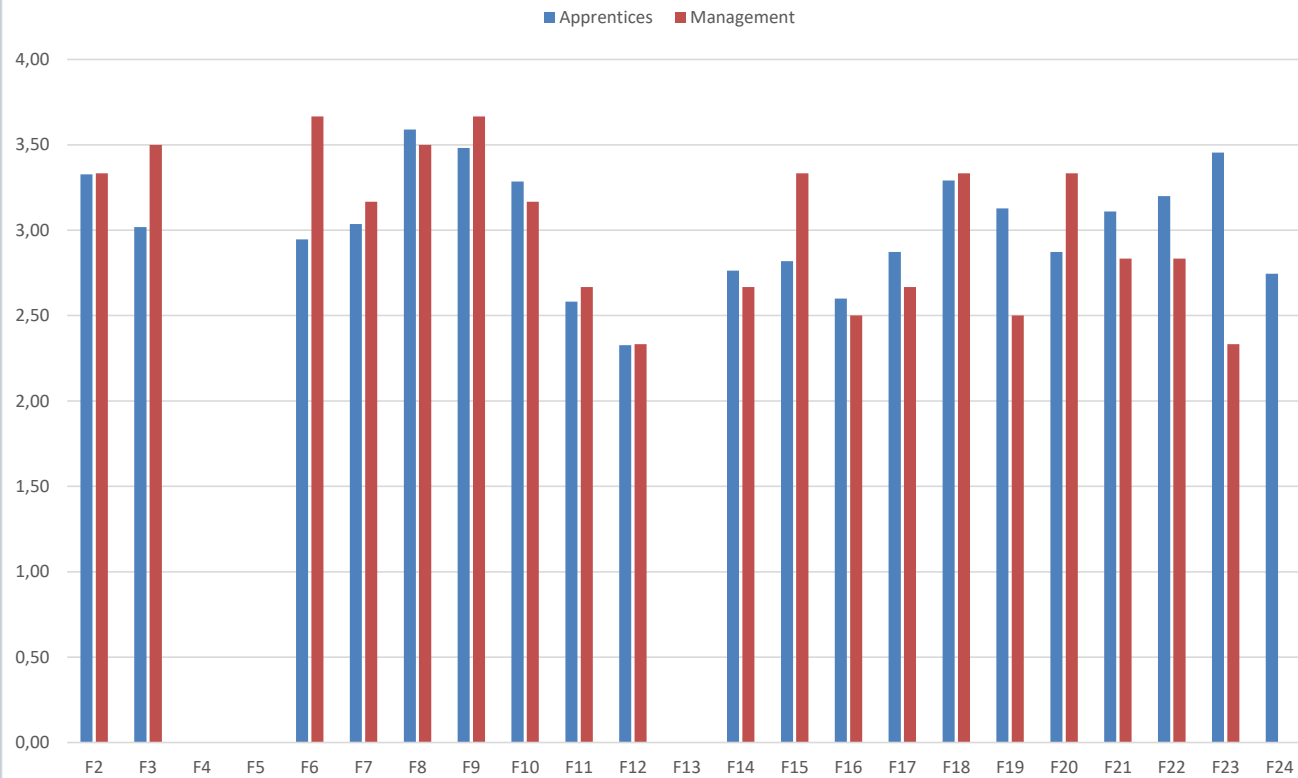
This file is a product of the Erasmus+ Project: Educational Transformation for the 21st Century - EduTrans21

Management Apprentices

F1	3,17			
F2	3,33	F1	3,33	
F3	3,50	F2	3,02	
F4	3,67			
F5	3,33			
F6	3,67	F3	2,95	
F7	3,17	F4	3,04	
F8	3,50	F5	3,59	
F9	3,67	F6	3,48	
F10	3,17	F7	3,29	
F11	2,67	F8	2,58	
F12	2,33	F9	2,33	
F13	2,83			
F14	2,67	F10	2,76	
F15	3,33	F11	2,82	
F16	2,50	F12	2,60	
F17	2,67	F13	2,87	
F18	3,33	F14	3,29	
F19	2,50	F15	3,13	
F20	3,33	F16	2,87	
F21	2,83	F17	3,11	
F22	2,83	F18	3,20	
F23	2,33	F19	3,45	
F24	2,67		2,75	
F25	3,50			
F26	3,00			

Marked in the column Apprentices are those results that are higher scored by apprentices than by the management

Comparison Management - Apprentices



- 1 The technological infrastructure is sufficient for every kind of digital tools for teaching and learning also for blended design
- 2 Each student gets an individual learning account via email and collaboration tools
- 3 Complete resources are available for the students learning process
- 4 Maintenance of the infrastructure is organized for continuous improvement
- 5 Teachers master all digital tools in use for administrative purposes
- 6 Teachers develop digital materials for the LMS
- 7 Teachers use digital tools for the design of collaboration activities among students
- 8 Students use digital tools for collaboration
- 9 Students use digital tools for individual learning with provided resources
- 10 Students develop digital materials as products of the learning process
- 11 Students observe the safety requirements for the use of digital tools
- 12 Green skills are integrated in the curriculum
- 13 The management emphasizes the importance of green skills
- 14 Teachers integrate sustainable goals (SDG) into teaching and learning
- 15 Teachers are able to explain dominant factors for climate change
- 16 Students deal with sustainability challenges in lessons or projects
- 17 Students are able to explain dominant factors of climate change
- 18 Teachers design systematically teamwork for the lessons
- 19 Teachers organize feedback and retrospectives to improve team processes
- 20 Teachers are able to integrate problem solving approaches into lessons and projects
- 21 Students are able to work effective and efficient in teams
- 22 Students are able to divide the workload among team members
- 23 Students are able to work according to SCRUM and design thinking principles
- 24 School management integrates measures for continuing improvement processes
- 25 School management has established a support structure for teachers during improvement processes
- 26 School management continuously improves the collaboration with companies towards work based learning

EduTrans21 Survey concerning school status of ITECH

26 questions for the
management and the
apprentices

F1	3,17	
F2	3,33	
F3	3,50	
F4	3,67	
F5	3,33	
F6	3,67	
F7	3,17	
F8	3,50	
F9	3,67	
F10	3,17	
F11	2,67	Students observe the safety requirements for the use of digital tools
F12	2,33	Green skills are integrated in the curriculum
F13	2,83	The management emphasizes the importance of green skills
F14	2,67	Teachers integrate sustainable goals (SDG) into teaching and learning
F15	3,33	
F16	2,50	Students deal with sustainability challenges in lessons or projects
F17	2,67	Students are able to explain dominant factors of climate change
F18	3,33	
F19	2,50	Teachers organize feedback and retrospectives to improve team processes
F20	3,33	
F21	2,83	Students are able to work effective and efficient in teams
F22	2,83	Students are able to divide the workload among team members
F23	2,33	Students are able to work according to SCRUM and design thinking principles
F24	2,67	School management integrates measures for continuing improvement processes
F25	3,50	
F26	3,00	

Marked are all answers with a score under 3

ITECH Survey - Management

